

NXT15

PICK & CARRY CRANE TELEHANDLER



STANDARD EQUIPMENT

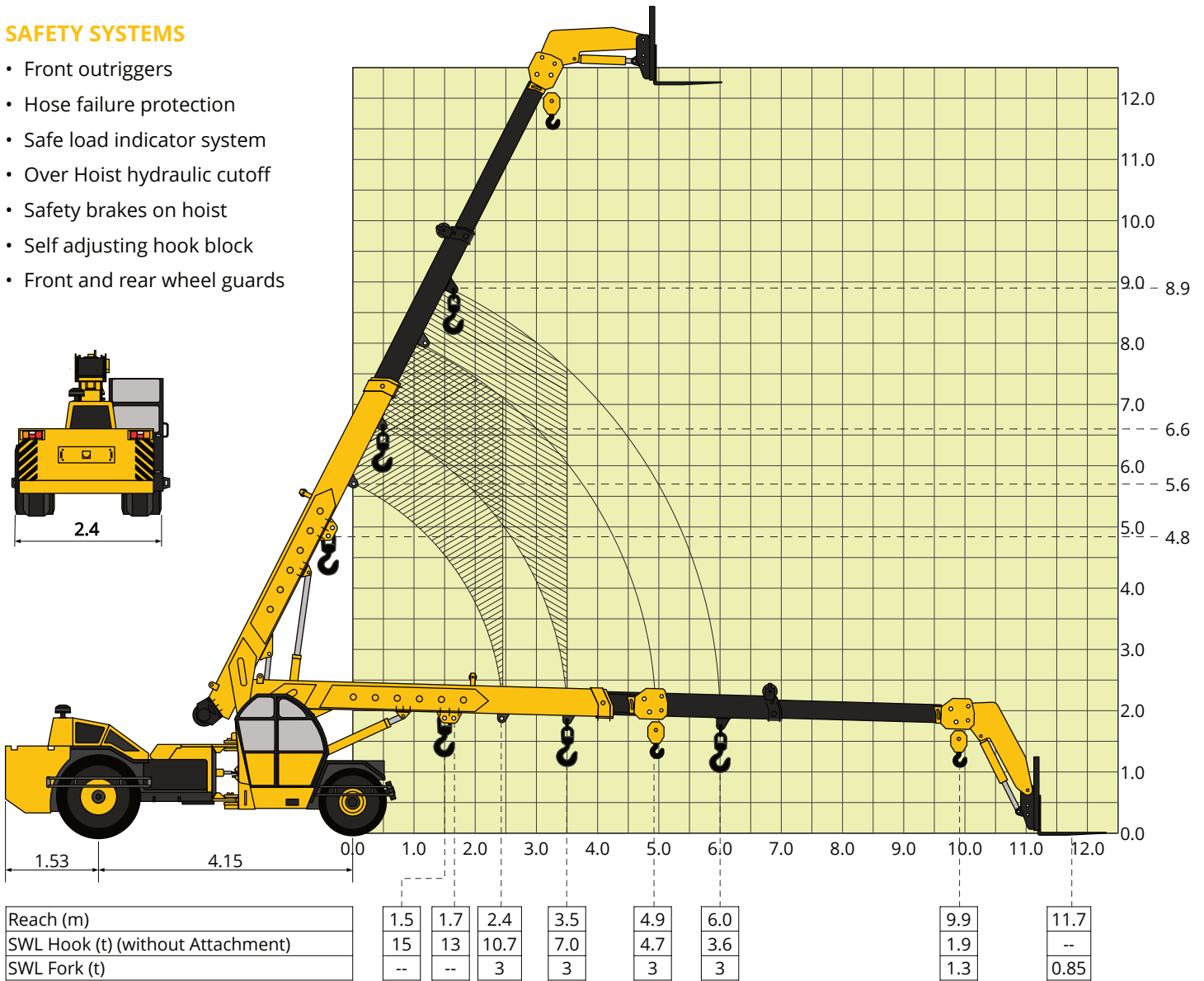
- Front mounted fully enclosed wide view cabin
- Rear View Camera
- Front and rear work lights
- Beacon rotating light
- Reflectors & Rear View Mirrors
- Cabin Fan

OPTIONAL EQUIPMENT

- Front and side Proximity Sensors
- Cabin Front Glass Protector
- Helper/Slinger Seat
- Spark arrester
- Fire Extinguisher
- Drag winch

SAFETY SYSTEMS

- Front outriggers
- Hose failure protection
- Safe load indicator system
- Over Hoist hydraulic cutoff
- Safety brakes on hoist
- Self adjusting hook block
- Front and rear wheel guards



SPECIFICATIONS

RATED CAPACITY (ON HOOK)	Max Weight	15.0 ton at 1.50 m radius
	Max Raduis	1.3 ton at 9.90 m radius
	Max Height	11.50 m
RATED CAPACITY (ON FORKS)	Max Weight	3.0 ton at 2.40 m radius
	Max Raduis	0.85 ton at 11.7 m radius
	Max Height	12.2 m
BOOM	Length	11.7 m
	Luffing Angle	-3 to 63 degrees
	Telescoping	3 part boom hydraulically powered & fully synchronised.
	Type	Slotted boom with rope compensation
	Derricking	Through double acting hydraulic cylinders
DIMENSIONS	Length (with Hook)	10 600 mm
	Length (with Forks)	13 000 mm
	Width	2 400 mm
	Height	2 600 mm
TRACK	Front	1 900 mm
	Rear	1 800 mm
WHEELBASE		4 150 mm
OPERATING WEIGHT	Front	4 900 kg
	Rear	9 700 kg
	Total	14 600 kg
PERFORMANCE	Speed	max 32 km/hr
	Creep Speed	min 1.5 km/hr
	Gradeability	40% unladen
ENGINE	Make and Model	TATA 4 cylinder, water cooled diesel engine,developing 56.7KW @ 2200 RPM
TRANSMISSION	Drive	2 wheel drive
	Type	Synchromesh gearbox. Speeds-8 forward and 2 reverse with hi-low selector
	Clutch	Single, dry type friction clutch plate
STEERING	Type	Full power orbitrol with twin hydraulic double acting rams
	Articulation	40 degrees
	Turning Radius	8 200 mm
TYRES	Front	4 nos. - 11.00 x 20 - 16 PR
	Front	2 nos. - 14.00 x 25 - 20 PR
BRAKES	Service	Fully air actuated brakes on rear wheels and pneumatically assisted hydraulic brakes are provided on front wheels
	Parking	Air operated, spring actuated fail safe brakes
HOIST MECHANISM	Hook Block	8 T Hydraulically operated with 4 falls snatch block.
	Line Speed	50 m/min
ELECTRICAL SYSTEM		12 V, DC

